



## Initial network Capacity check

Biomethane Gas to Grid  
Network entry connections

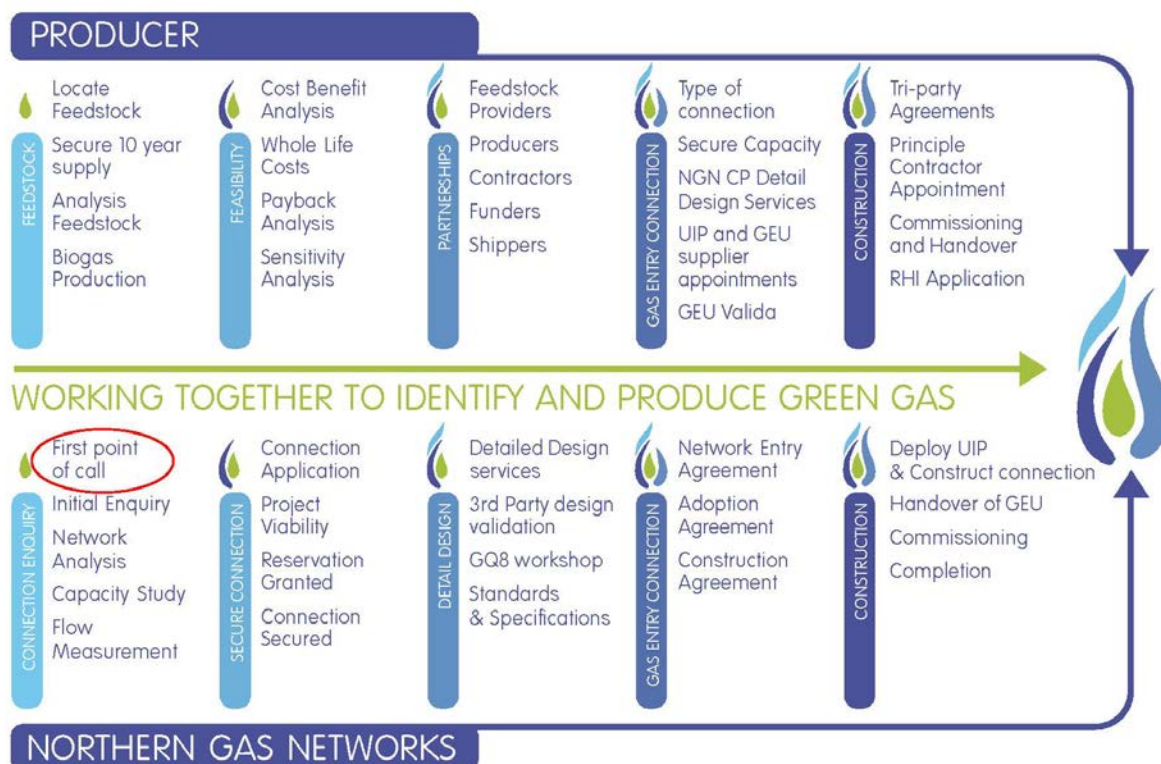
Initial DN Entry enquiry form

# Biomethane DN Entry Connections Enquiry Form for Network Capacity Check

## Capacity Enquiry

Northern Gas Network have adopted an approach to support producers from 'cradle to grave' during the development of a biomethane gas to grid project. From this point onwards, Northern Gas Network will proactively work with the Producers while they identify, develop, construct and produce their sustainable locally sourced gas projects.

Please contact our Biomethane Team and they will inform you of the initiatives put in place to proactively support the Producers / Developers to successfully flow gas into the network.



## Contact Us

For strategic advice and for gas to grid delivery process information / guidance please contact

Keith Warburton  
Key Account Manager  
Tel: 0771 159 4722

[kwarburton@northerngas.co.uk](mailto:kwarburton@northerngas.co.uk)

Or alternatively visit Northern Gas Networks dedicated Biomethane website and Gas to Grid project feasibility calculator at the following website addresses:

[www.biomethane.northerngasnetworks.co.uk](http://www.biomethane.northerngasnetworks.co.uk)

[www.gastogrid.northerngasnetworks.co.uk](http://www.gastogrid.northerngasnetworks.co.uk)

**Biomethane DN Entry Connections**  
**Enquiry Form for Network Capacity Check**

## Required Information

Please populate the table below with the information required to undertake the network capacity check.

Developer / Producer or Project Manager details	
<b>Company / Organisation</b>  Name:  Address:	<b>Contact Details</b>  Name:  Role:  Tel:  Email:
Gas to Grid Project Details	
<b>Name of Project</b>	<b>Site Location:</b>
<b>Site Description.</b> Please provide any additional information on the site location that would help inform us on your enquiry.	<b>Estimated Flow Rate,</b> based on (standard meter cubes (SCM) per hour) 24 hours a day, seven days a week injection:
<b>Electricity production:</b> Will the project produce electricity for the Grid? If yes, how much is planned	<b>Gas Extraction.</b> Will gas be extracted from the same network that Biomethane is being injected?
<b>Partnering Opportunities:</b> Is the Producer / Developer interested in Partnering with other key stakeholders to identify potential projects?	<b>Confidentiality:</b> Can NGN share your details with other Stakeholders if your enquiry does not have the desired results?
<b>Additional Information / Comments -</b> Please provide any additional information that may help us in your enquiry on the proposed Gas to Grid project.	