



Full Capacity Study Request Form

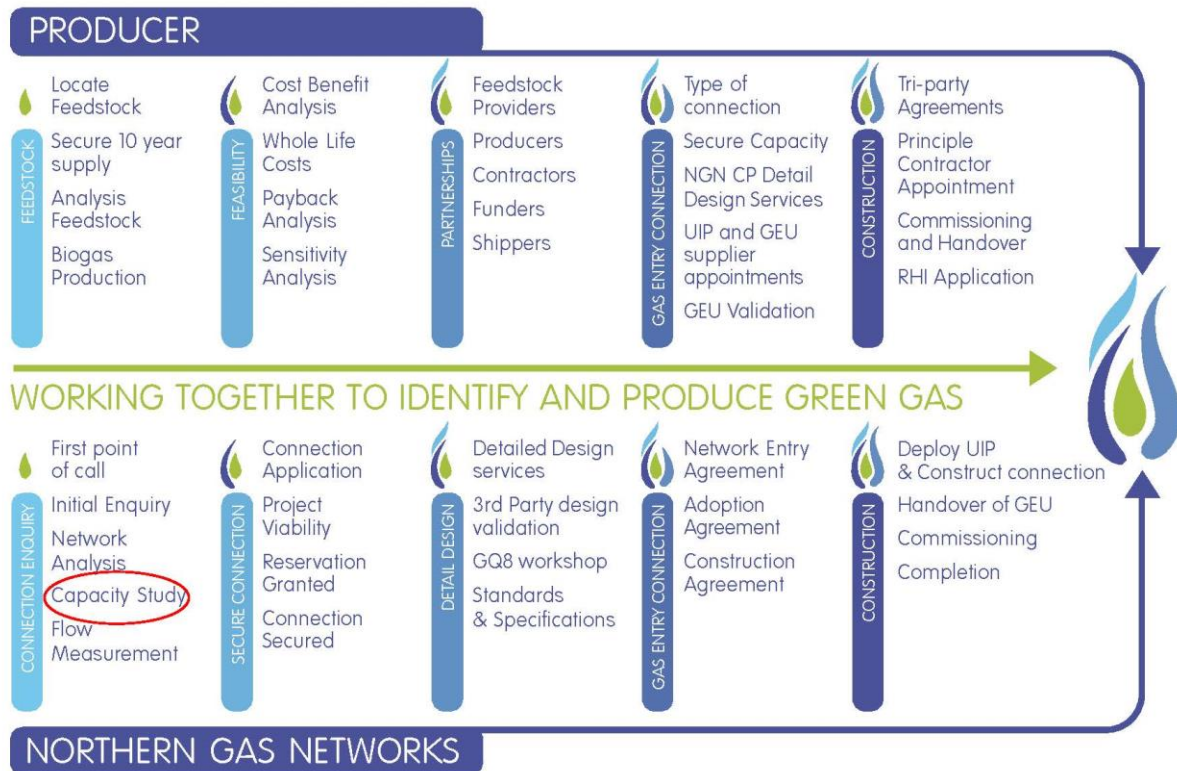
Bio-methane Gas to Grid
Network entry connections

Bio-methane Injection Full Capacity Study
Request Form

Insert: Project Name and NGN Reference
Number.

Capacity Study Request

Northern Gas Network have adopted an approach to support producers from ‘cradle to grave’ during the development of a bio methane gas to grid project. Northern Gas Network will proactively work with the Producers while they identify, develop, construct and produce their sustainable locally sourced gas projects.



Contact Us

For strategic advice and for gas to grid delivery process information / guidance please contact

biomethanedoc@northerngas.co.uk

Or alternatively visit Northern Gas Networks dedicated Bio methane website

www.biomethane.northerngasnetworks.co.uk

Required Information

Please populate the table below with the information required to undertake the network capacity check.

Developer / Producer or Project Manager details	
Company / Organisation Name: Address:	Contact Details Name: Role: Tel: Email:
NGN Reference Number (same as initial enquiry reference)	Date of application for Full Study.
Gas to Grid Project Details	
Full Name of Project:	Site Location: (including Grid coordinates and Postcode)
Confirmation of required flow rate in scmh:	Is the study on Medium, Intermediate or High Pressure Option (As identified from initial Enquiry)
Has the producer agreed to or paid the NGN costs for this study: Y/N	

Please confirm whether or not an Initial Capacity Check has been undertaken on this project?

Yes

No