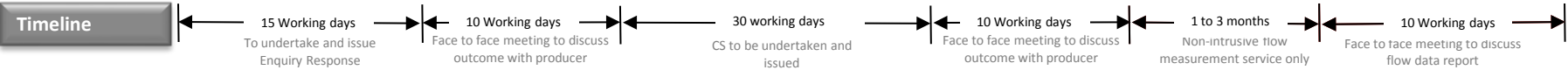
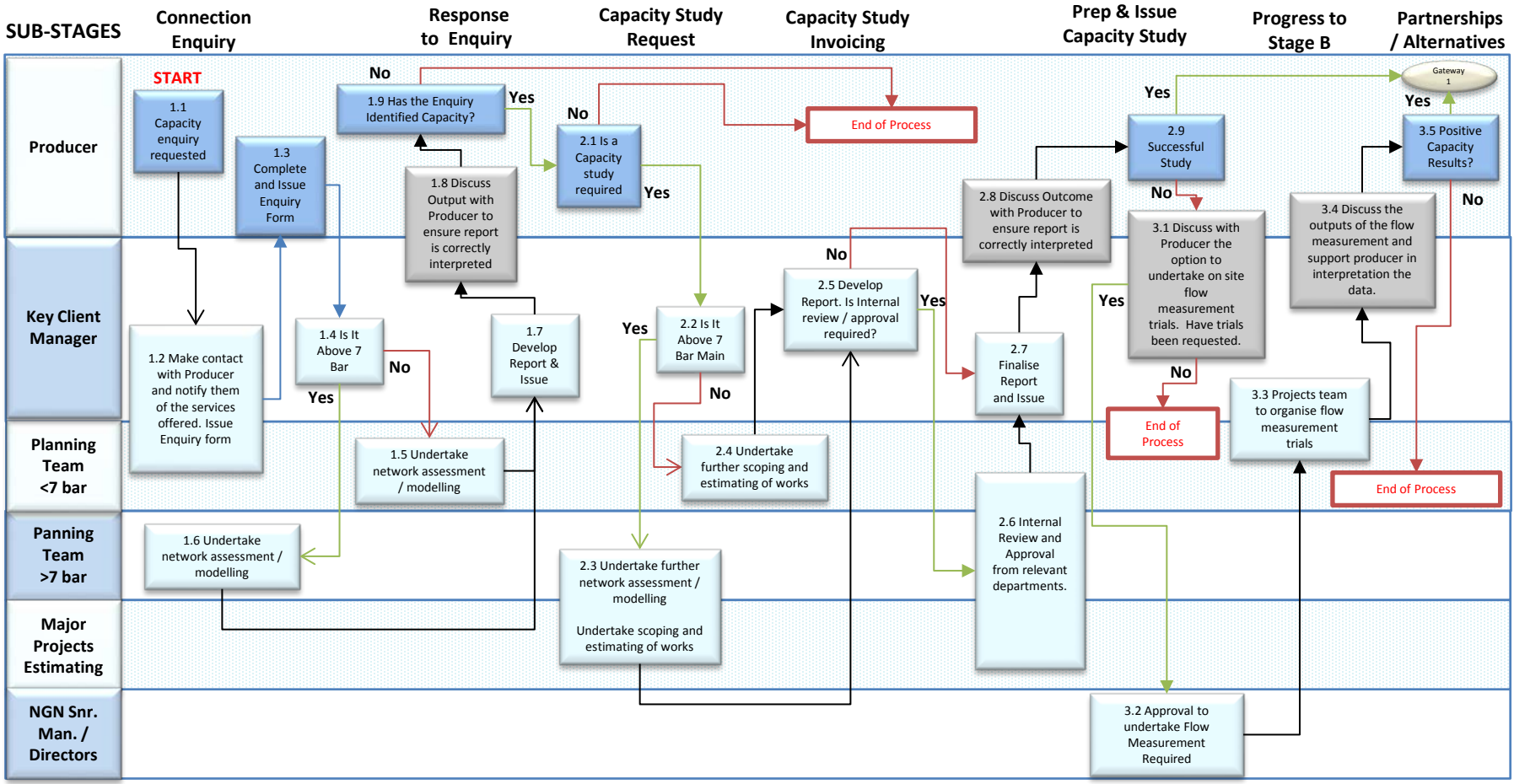


Stage 1 Network Capacity

GW1
Successful
CS



KEY Deliverables	Initial Enquiry Response	Capacity Study	Capacity Study Report	Flow Measurement	Flow measurement telemetry data analysis / interpretation of Data
<ul style="list-style-type: none"> Enquiry Form DNEE V1 - Estimated flow rate - Site location - Gas extraction from network - Company details 	<ul style="list-style-type: none"> - Network name and Location - Potential Capacity - System prioritisation - Stability of System - Quotation for CS 	<ul style="list-style-type: none"> - EXP 01 Approval Form - Formal Offer to undertake CS - Terms & conditions - Invoice / Payment Application 	<ul style="list-style-type: none"> - Location & Network Plan - Annual within day Capacity - prioritisation of entry effect - Average, warm and cold condition analysis - Budget Quote for CS 	<ul style="list-style-type: none"> - EXP 01 Approval Form - Formal Offer to undertake CS - Terms & conditions - Invoice / Payment Application 	<ul style="list-style-type: none"> - Flow measurement telemetry data analysis / interpretation of Data - Flow Measurement Report

KEY Notes	Enquiry form can be found on Northern Gas Network website. Alternatively, the Producer can contact NGN's Biomethane Projects Key Account Manager	To ensure NGN meets its commitments to RIIO and internal targets of maintaining standard of service, Enquiry to be logged on Biomethane System to monitor progress and response times. There is no Cost to the Producer for the initial enquiry report.	Once an Enquiry has been undertaken, the Producer can request NGN to undertake a detailed analysis of the network and produce a Capacity Study report. The cost of the service is £2,650. In addition to the CS outputs, the CS report will include – Alternative DN connections, Virtual Network opportunities, detailed design process and services offered by NGN with indicative costs of the connection pipe and connection point works. The technical data provided within the report can be difficult to interpret and thus NGN will ensure a face to face meeting is held to ensure the data is correctly interpreted.	Once the Producer has undertake a Capacity Study and the Producer requires more detailed actual flow data, NGN can undertake on site (non intrusive only) flow measurement. The flow measurement device that is used is an ultrasonic flow meter with an accuracy tolerance of plus or minus 5%. The duration of the flow measurement can be dictated by the Producer. Upfront payment will be required. Cost differs site by site, depending on site specifics